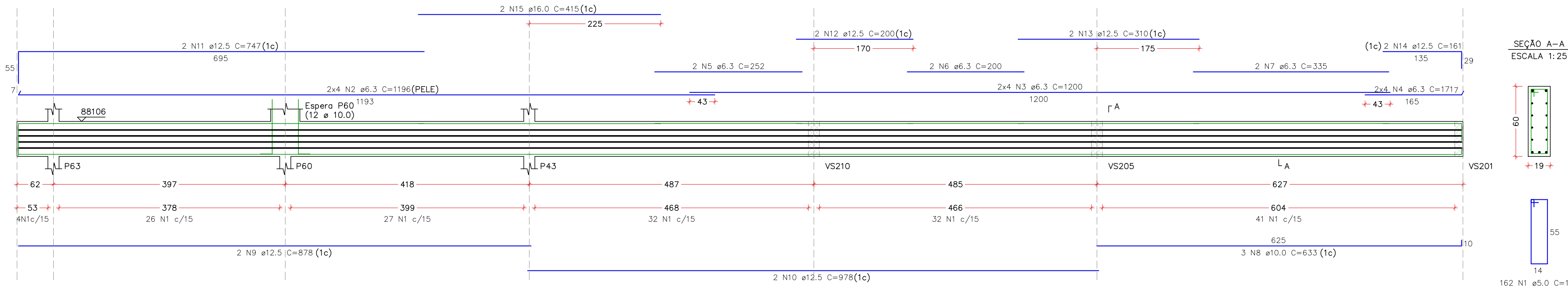
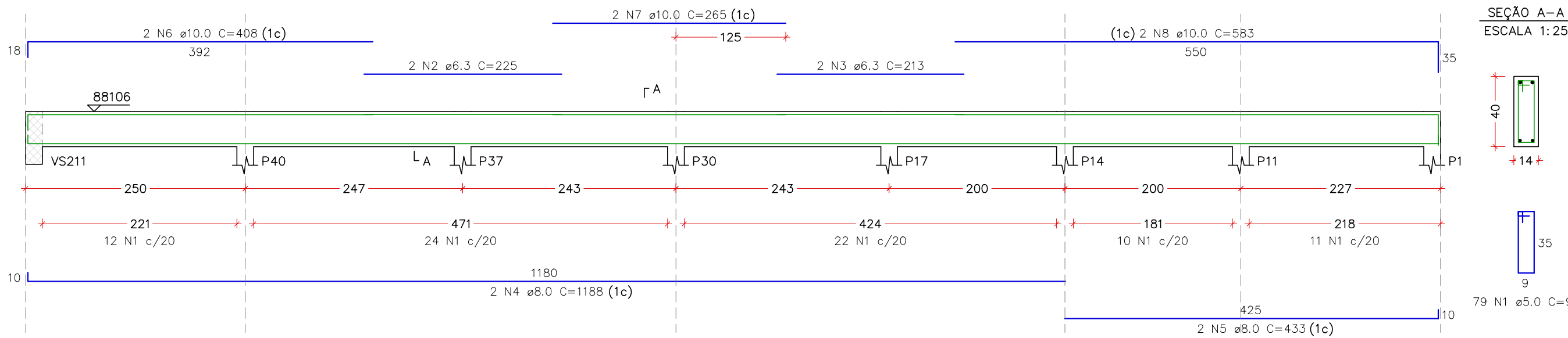


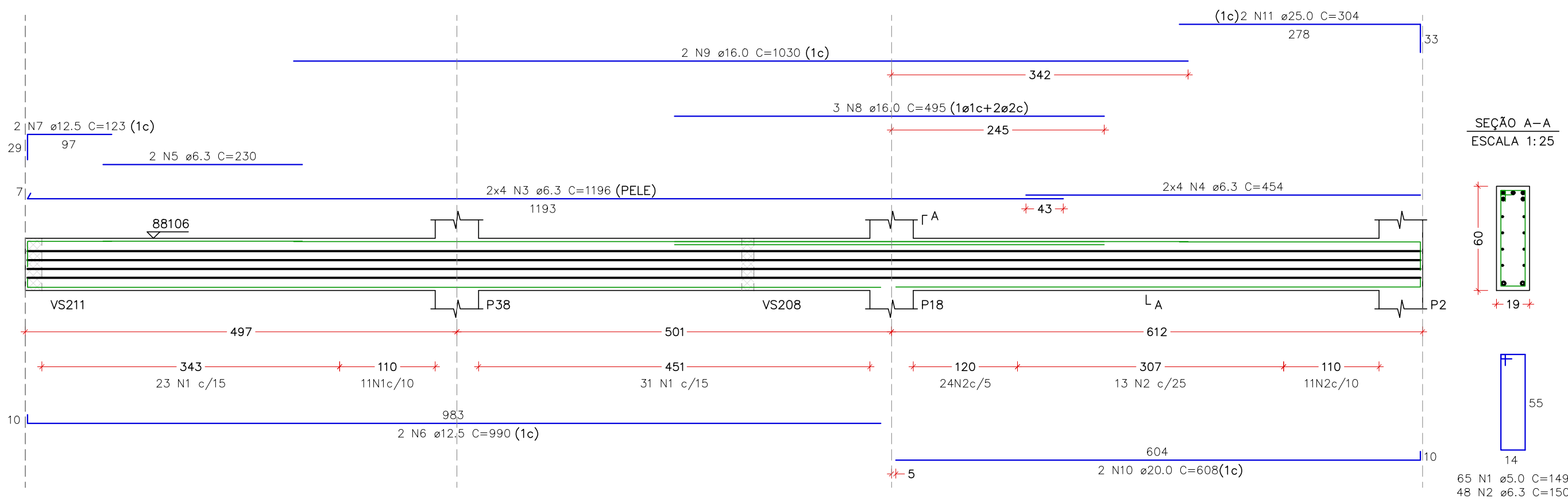
VS215
ESCALA 1:50



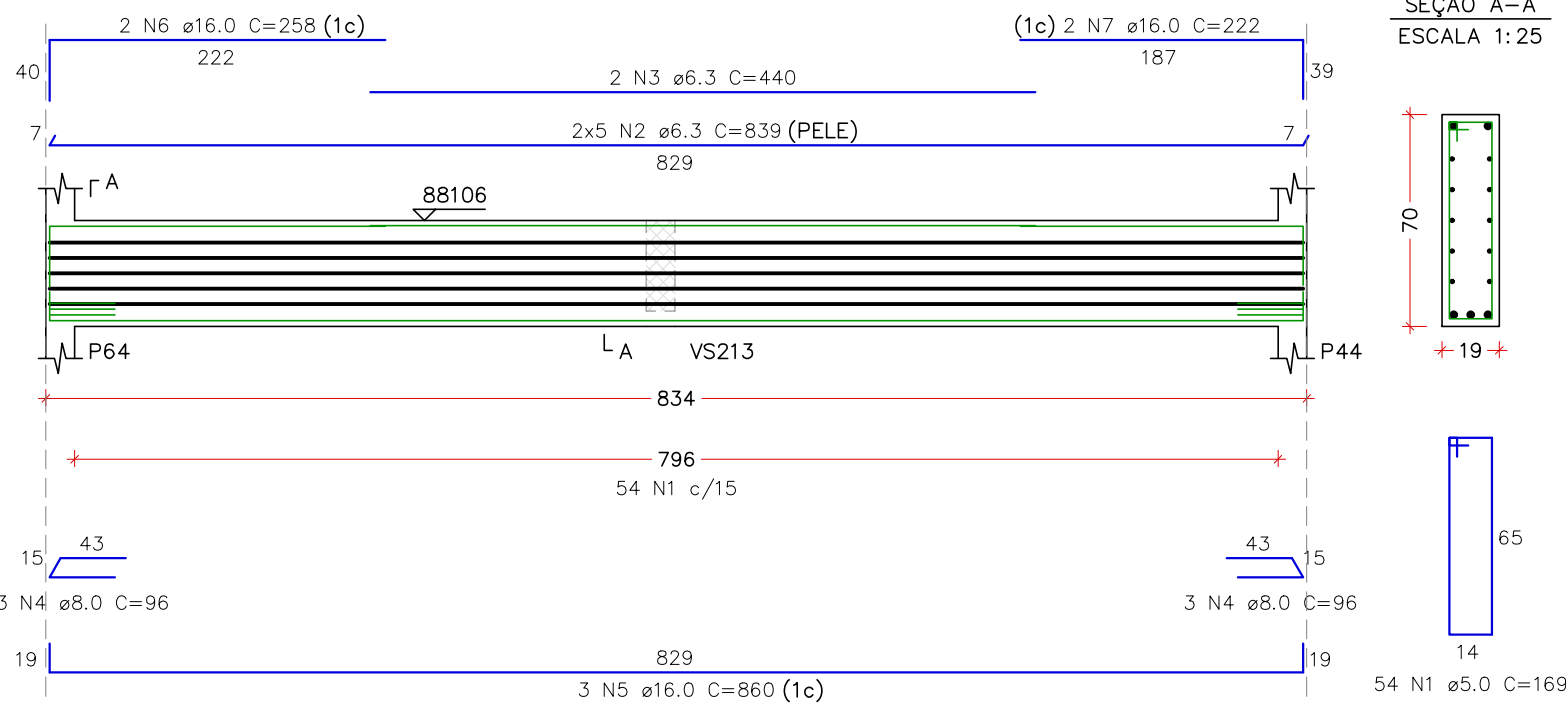
VS216
ESCALA 1:50



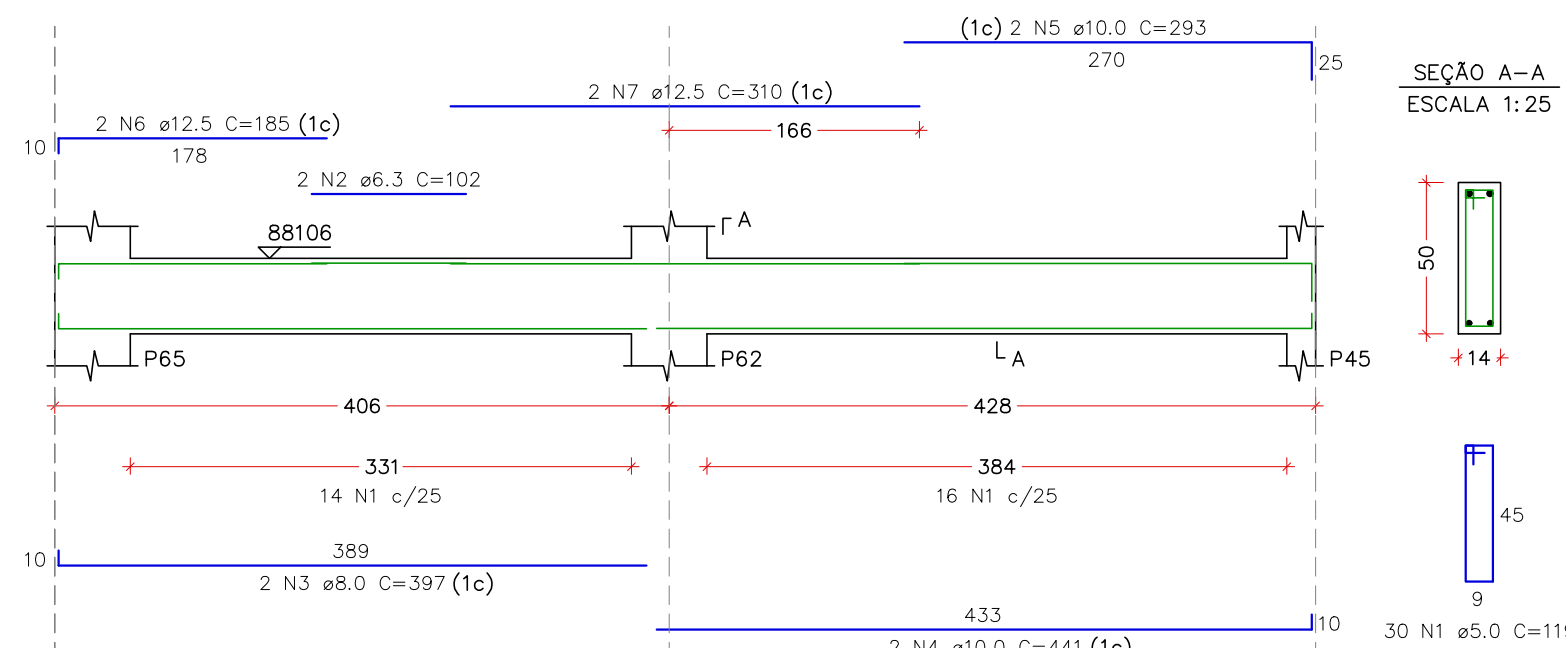
VS218
ESCALA 1:50



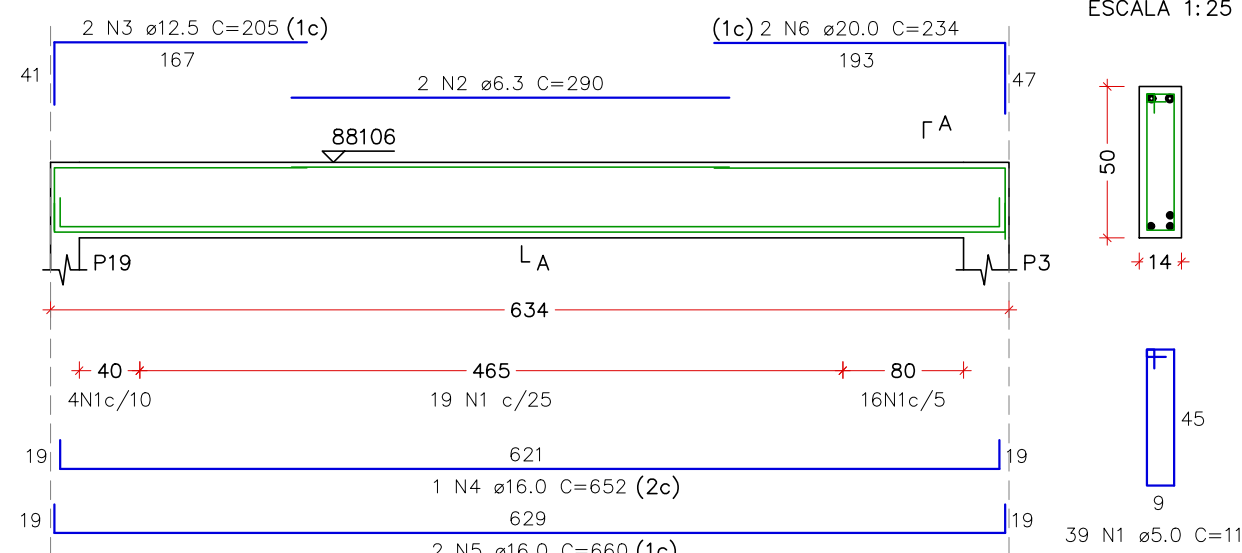
VS217
ESCALA 1:50



VS219
ESCALA 1:50



VS220
ESCALA 1:50



RELAÇÃO DO AÇO – PAV. SUPERIOR 2

ELEMENTO	AÇO	N	DIAM (mm)	QUANT	C.UNIT (cm)	C.TOTAL (cm)
VS215	CA60	1	5,0	162	149	24138
	CA50	2	6,3	8	1196	9568
	CA50	3	6,3	8	1200	9600
	CA50	4	6,3	8	171	1368
	CA50	5	6,3	2	335	504
	CA50	6	6,3	2	220	400
	CA50	7	6,3	2	335	670
	CA50	8	10,0	3	633	1959
	CA50	9	12,5	2	878	1756
	CA50	10	12,5	2	978	1956
VS216	CA50	11	12,5	2	310	620
	CA50	12	12,5	2	200	400
	CA50	13	12,5	2	310	620
	CA50	14	12,5	2	161	322
	CA50	15	16,0	2	415	830
	CA60	1	5,0	79	99	7851
	CA50	2	6,3	2	225	450
	CA50	3	6,3	2	213	426
	CA50	4	8,0	2	1188	2376
	CA50	5	8,0	2	433	866
VS217	CA50	6	10,0	2	408	816
	CA60	7	10,0	2	265	530
	CA50	8	10,0	2	583	1166
	CA60	1	5,0	64	169	1076
	CA50	2	6,3	10	839	8390
	CA50	3	6,3	2	440	880
	CA50	4	8,0	6	96	576
	CA50	5	16,0	3	860	2580
	CA50	6	16,0	2	258	516
	CA50	7	16,0	2	222	444
VS218	CA60	1	5,0	65	149	9685
	CA50	2	6,3	48	150	7200
	CA50	3	6,3	8	1196	5568
	CA50	4	6,3	8	454	3632
	CA50	5	6,3	2	230	460
	CA50	6	12,5	2	990	1980
	CA50	7	12,5	2	123	246
	CA50	8	16,0	3	495	1485
	CA50	9	16,0	2	1030	2060
	CA50	10	20,0	2	608	1216
VS219	CA50	11	25,0	2	304	608
	CA60	1	5,0	30	119	3570
	CA50	2	6,3	2	102	204
	CA50	3	8,0	2	397	794
	CA50	4	10,0	2	441	882
	CA50	5	10,0	2	283	566
	CA50	6	12,5	2	185	370
	CA50	7	12,5	2	310	620
	CA60	1	5,0	39	119	4641
	CA50	2	6,3	2	280	560
VS220	CA50	3	12,5	2	202	404
	CA50	4	16,0	2	652	1304
	CA50	5	16,0	2	660	1320
	CA50	6	20,0	2	234	468

RESUMO DO AÇO

AÇO	DIAM (mm)	C.TOTAL (m)	PESO + 10% (kg)
CA50	6,3	539	145,1
CA50	8,0	26	20
CA50	10,0	58,8	39,9
CA50	12,5	101,7	107,8
CA50	16,0	98,9	171,7
CA50	20,0	16,8	45,7
CA50	25,0	6,1	25,8
CA50	6	20,0	2
PESO TOTAL (kg)		589,8	100

VOLUME DE CONCRETO (C=30) = 7,20 m³
ÁREA DE FORMA = 77,94 m²



Rua Cel. Joaquim Francisco, 341, Bairro Virgínia
CEP- 37501-052 - Itajubá / MG
Tel. (35) 2143 - 9087
www.dacengenharia.com.br

ALOSIO CAETANO FERREIRA CREA: MG-97.132/D

RESPONSÁVEL TÉCNICO E AUTOR

RAFAEL BARBOSA CARREIRA CAU: 00A155411-5

CONSTRUÇÃO DA ESCOLA MUNICIPAL ALEGRINHO

ENDEREÇO
RUA LOURDES DE SOUZA SANTOS, COLINA VERDE
POUSO ALEGRE – MINAS GERAIS

DISCIPLINA
ESTRUTURAL

ASSUNTO
PROJETO ESTRUTURAL EM CONCRETO ARMADO
DETALHAMENTOS
VIGAS DO PAV. SUPERIOR 2

FASE DO PROJETO
EXECUTIVO

FOLHA Nº
37/53

DATA INICIAL
02/02/2024

ESCALA
INDICADA

REVISÃO
R03

ARQUIVO
DAC-PMPA-ALEG-PE-EST-R03.DWG